

FMT-177-IPY
 P/N: XXXX
 Wt: 269.8 LBS
 FINISH: NONE

CUTTING SPECIFICATIONS:
 TOP/SIDE:
 98 1/8 X 51 5/8
 BDT: 23 1/8 X 74 3/8
 SEC-A: 20 3/4 X 72 5/8
 SEC-B: 19 5/8 X 72 5/8

BAFFLES:
 1 19 5/8 X 14 3/4 (2)
 2 17 1/8 X 20 3/4 (2)
 3 23 1/8 X 20 3/4 (1)

BOX SECTION-C:
 BODY SECTION-C:
 36 1/8 X 28 1/8 (2)
 END SECTION-C:
 19 5/8 X 14 3/4 (2)

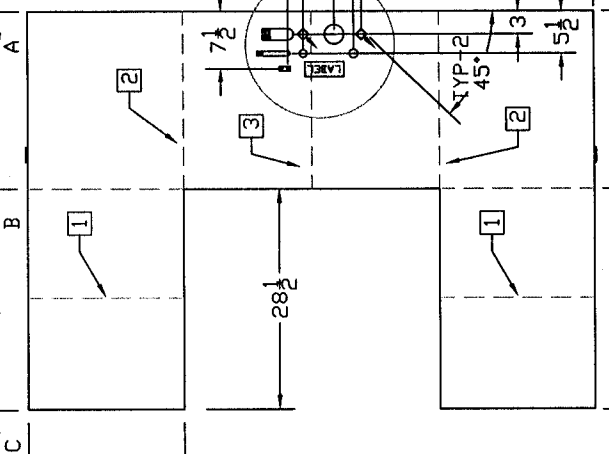
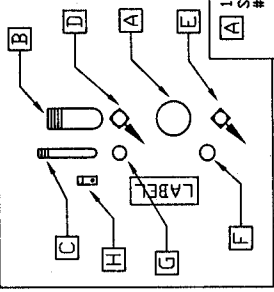
CUTTING SPECIFICATIONS:
 07-26-04
 ADDED 3/8" X 1/4" ELB
 TO GEN P/UP 7 RETURN

FLORIDA MARINE TANKS, INC.
 16480 N.W. 48 AVE. HIALEAH, FL. 33014
 ISLAND PACKET 177 GALLON
 DIESEL FUEL TANK FOR THE 445

DRAWN BY: J. MONTERREY
 NET GAL: 177.1
 SCALE: 3/4"=1'
 DATE: 03-15-04
 MATERIAL: .1875" AL
 DRAWING NO: IPY177.10304
 APP'D:

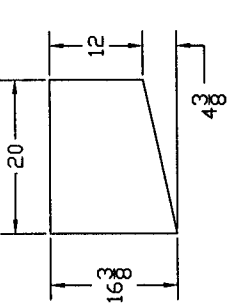
SPECIFICATIONS:

- A 1 1/2" NPT W/ SPIRAL SENDER ROCHESTER #8680-6 FUEL 19"
- B FILL 1 1/2" O.D. X 90"
- C VENT 5/8" O.D. X 90"
- D P/UP 3/8" NPT W/ 3/8" X 1/4" SS/STR/ELB W/ 1/4" MARINE VALVE (SEE DETAIL)
- E RETURN 3/8" NPT W/ 3/8" X 1/4" SS/STR/ELB (SEE DETAIL)
- F P/UP 3/8" NPT W/ 3/8" X 1/4" SS/STR/ELB & 1/4" ALUM PLUG (SEE DETAIL)
- G RETURN 3/8" NPT W/ 3/8" X 1/4" SS/STR/ELB & 1/4" ALUM PLUG (SEE DETAIL)
- H GROUND

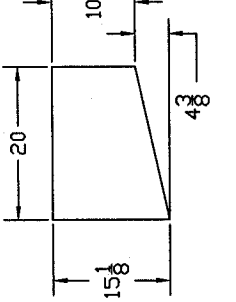


LIFTING EYES.
 (TYP-2).

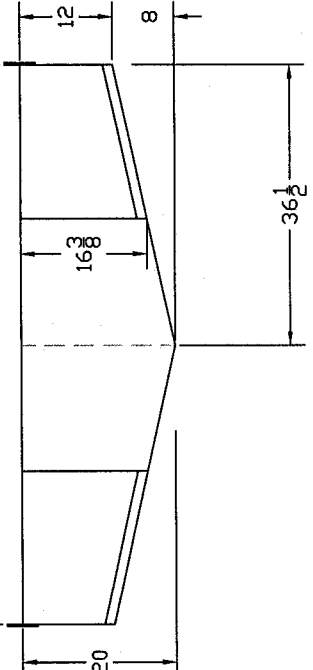
FWD CROSS-SECTION-C



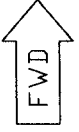
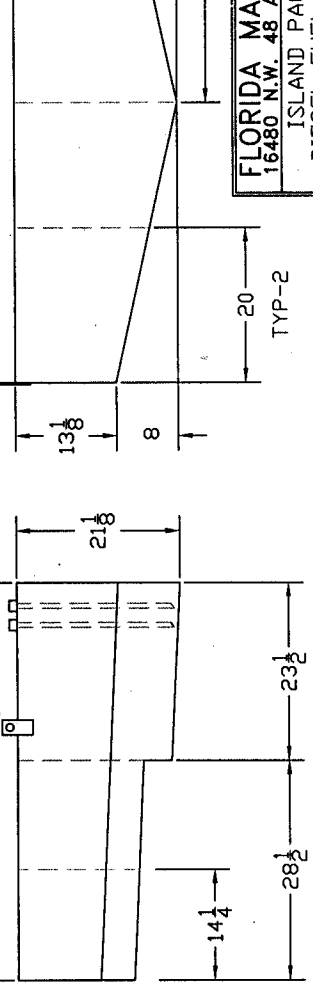
AFT CROSS-SECTION-C



CROSS-SECTION-B



CROSS-SECTION-A



PRODUCTION
 DATE 7/26/04 *Alisa*